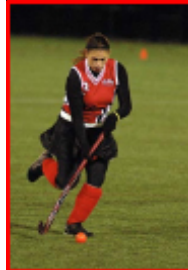




## 2005 Field Hockey Postseason Newsletter

### Coach's Corner

The 2005 Clark field hockey team finished the season with a 3-14 record. We were seeded seventh in the NEWMAC tournament and lost 1-0 in the quarterfinals against Springfield College, the eventual NEWMAC Champion. The 2005 team faced much adversity, including early season ending knee injuries to two promising players, first-year Madeleine Heneffield and sophomore Kelly Sinko. The loss to graduation, inexperience, lack of depth and injuries hampered our ability to be more successful. The team was able to start off the season with a 1-0 win over non-conference foe, Nichols College but fell short for a 10 game period before we found the winning way against Smith College, 1-0. We would win only one more game this season, against NEWMAC rival, WPI, 3-0, on our senior day. Even though we did not win as much as we would have hoped, there were a number of occasions when we played very competitively. In the Babson College game we held them scoreless until ten minutes left in the game. Babson had one of the most explosive offenses in the nation this season. We were also able to neutralize talented teams like Springfield College and Wellesley College for long periods of time during the game. In our NEWMAC Tournament quarterfinal game, our defense held Springfield scoreless until there were only three minutes left in the game.



Our team gained quality defensive experience over the course of the season that will surely help us in 2006. The team loses two senior captains, midfielder Meredith Courtemanche and forward Brittney Wickles to graduation this year. Meredith led the team in scoring with four goals and Brittney added a goal and two assists. We are optimistic for the 2006 campaign with the return of NEWMAC All-Conference goalkeeper Kaitlin Kelley. As a junior, Kaitlin led the NEWMAC in number of saves (243); save percentage (.856) and saves per game (14.3). Kaitlin was a highlight film for goalkeepers all season long making amazing saves against some of the best programs in the nation. Two other defenders who had an outstanding season were junior Ginny Mike and sophomore Brooke Osgood. Both of them were consistent performers who will solidify the defensive unit in 2006. Junior Alex Griffin and sophomore Kate Willis converted to defense this season and played aggressively. They both gained tremendous defensive experience. In the midfield this season, juniors Sara Rau and Kim Whittington helped our transition game with their strong passing skills while newcomers Hartley Bonisteel, Caitlin Huddy, Pam Ordnung and Hallie Westermann led our offensive charge. First-year goalkeeper Nora Feely, improved greatly over the course of the season and readied herself to protect the goal in the near future. We will be looking to recruit offensive players for next season. Our goal is to add speed and explosiveness to the forward line and midfield. We are hoping with a talented freshmen class that we can move forward and become more competitive.

### 2005 RESULTS

Home Games in Bold /Red • All home games at Granger Field

#### September

<b>Tue. 6</b>	<b>vs Nichols College</b>	<b>W 1-0</b>
Tue. 13	at UMass Dartmouth	L 0-2
<b>Thu. 15</b>	<b>vs Worcester State College</b>	<b>L 1-4</b>
Sun. 18	at Williams College	L 1-6
<b>Tue. 20</b>	<b>vs Connecticut College</b>	<b>L 0-3</b>
Sat. 24	at Mount Holyoke College*	L 0-3
<b>Tue. 27</b>	<b>vs Trinity College</b>	<b>L 2-3</b>
<b>Thu. 29</b>	<b>vs New England College</b>	<b>L 1-5</b>

#### October

<b>Sat. 1</b>	<b>vs MIT*</b>	<b>L 3-4</b>
<b>Tue. 4</b>	<b>vs Babson College*</b>	<b>L 0-2</b>
<b>Thu. 6</b>	<b>vs Anna Maria College</b>	<b>L 0-1 (1OT)</b>
<b>Tue. 11</b>	<b>vs Smith College*</b>	<b>W 1-0</b>
Sat. 15	at Springfield College*	L 1-4
Tue. 18	at Wellesley College*	L 0-1
<b>Sat. 22</b>	<b>vs WPI*</b>	<b>W 3-0</b>
Tue. 25	at Wheaton College*	L 0-3
Sat. 29	NEWMAC Quarterfinals at #2 Springfield College	L 0-1

\* NEWMAC Conference Game

### POSTSEASON AWARDS

Junior goalkeeper Kaitlin Kelley received Second Team New England East Regional All-America and First Team NEWMAC All-Conference honors. She was outstanding in goal this season leading the conference in number of saves (243); save percentage (.856) and saves per game (14.3). Against Springfield in the NEWMAC quarterfinals she recorded 27 saves. Kaitlin is the 27th Clark field hockey player to be recognized as a regional All-American.



Four players earned NEWMAC Academic All-Conference honors for their commitment to academic excellence. Honorees must have at least a 3.5/4.0 after the 2005 spring semester. Those players receiving this honor include juniors Pam Ordnung, Sara Rau, Kim Whittington and sophomore Kelly Sinko.

### ALUMNI GAME WRAP-UP

On October 22, we had an alumni game before the varsity contest against WPI. The die hard alumni faced the drizzly morning with lots of energy and pride. It was a competitive affair going up and down the field. After the game we mingled and snacked on pizza in the Dolan Field House. Those in attendance were: Jill Barnes '05, Kara Duffy '03, Erica Fitch '04, Karrie Ford '99, Katie Gatton '03, Lynne Casey Gould '02, Karen Patterson Greene '92, Erika LeClair '05, Julie Mazeika '03, Ashley Perez '05 and Kristina Richio '05. Next year we are hoping for even more of you to join us. I have heard through the grapevine that some of our field hockey alumni have had babies in 2005. Congratulations to all of you and your families. Email some baby photos!

Friends of Clark Field Hockey has been formed under the umbrella of Friends of Clark Athletics. If you are interested in supporting the field hockey program and would like more information, please contact Head Coach Linda Wage