

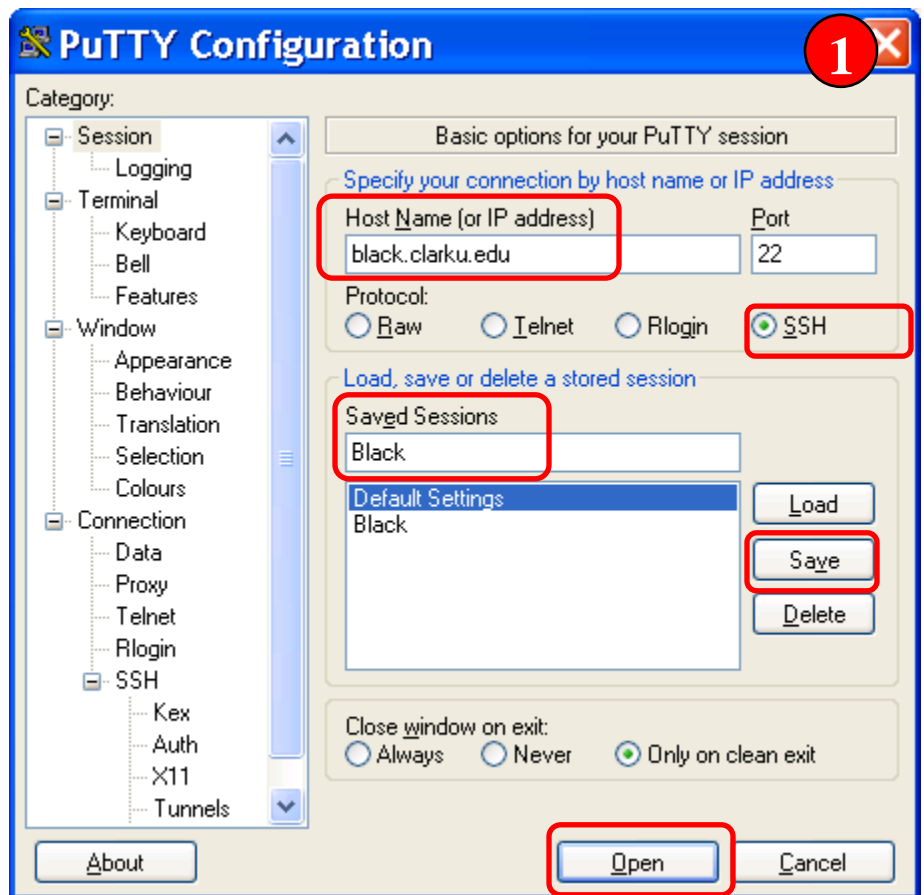
Help Document Series: Changing your Black account password

This document will assist you in changing your password on your Black account from an SSH client. To proceed you will need an active Black account and an SSH client like PuTTY and an internet connection.

Step 1

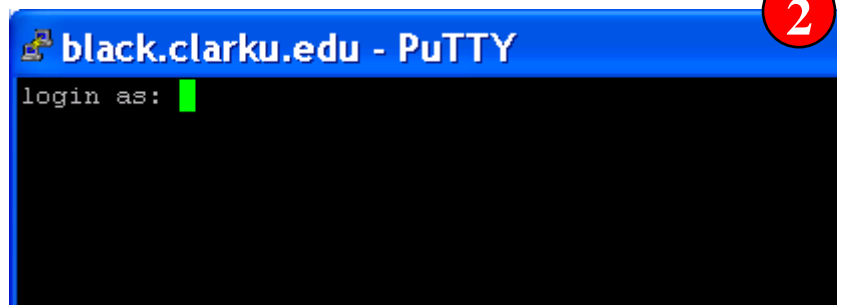
Launch PuTTY

- Enter **black.clarku.edu** in the Host Name field.
- Make sure **SSH** is selected
- Enter a session name in the **Saved Sessions** field.
- Click **Save**.
- Click **Open**



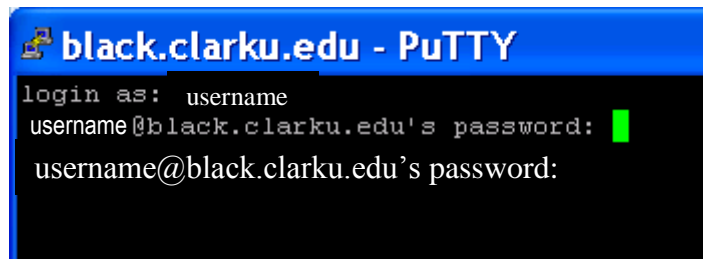
Step 2

In the command line window, type your black username at the **login as:** prompt and hit Enter.



Step 3

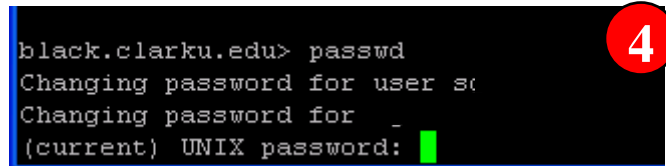
Enter your Black password at the password prompt and hit Enter.



```
black.clarku.edu - PuTTY
login as: username
username@black.clarku.edu's password: █
username@black.clarku.edu's password:
```

Step 4

After successfully logging in to Black, can type **passwd** (all lower case) and hit **Enter**.



```
black.clarku.edu> passwd
Changing password for user s:
Changing password for _:
(current) UNIX password: █
```

Step 5

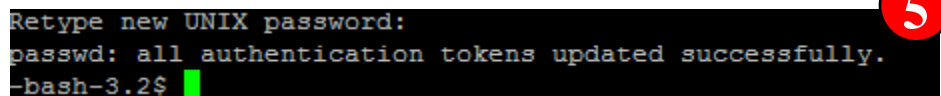
You will be prompted for the following:

(current) UNIX password: Type in your current password and hit **Enter**.

New UNIX Password: Type in a new case-sensitive password and hit **Enter**. For security purposes the new and old password will not be displayed as you type.

Retype new UNIX password: Re-type in the new password and press the **Enter** key.

When the password change is successful you will see the “all authentication tokens updated successfully” message and be returned to the normal command line.



```
Retype new UNIX password:
passwd: all authentication tokens updated successfully.
-bash-3.2$ █
```